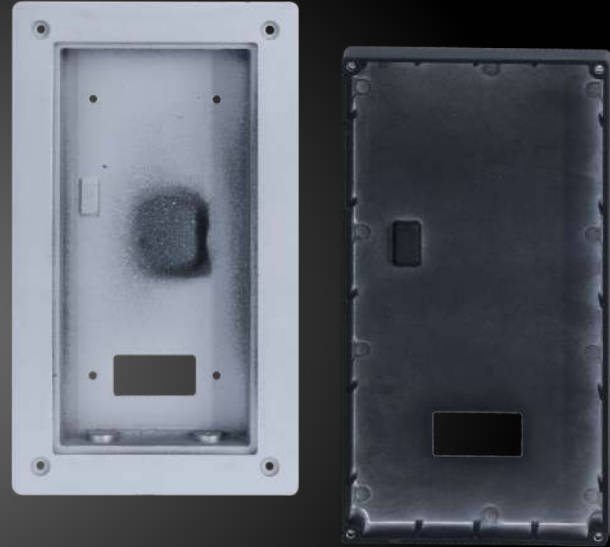


**SPRO**<sup>®</sup>

## VI-APT01-BKT-F

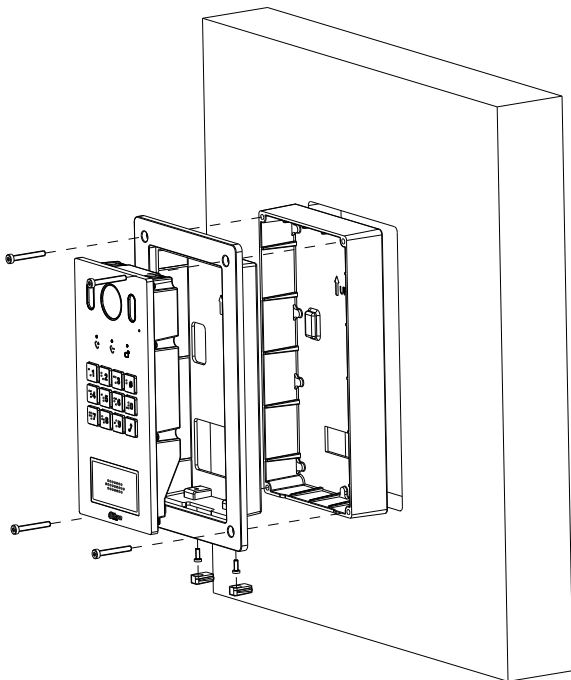
Flush mounted box



### Key Features:

- Material: ADC12
- Dimensions(Front) : 138.0mm×240.0mm×35.0mm(5.43"×9.45"×1.38")
- Dimensions(rear) : 120.8mm×222.7mm×33.0mm (4.76"×8.77"×1.30")
- Wall Opening Dimensions: 120.8mm×222.7mm×33.0mm (4.76"×8.77"×1.30")

### Installation



#### Step 1

Cut an opening with the size of the mounting box on the wall.

#### Step 2

Pull the reserved cables through the cable hole on the mounting box, and then fix the mounting box in the wall with cement.

#### Step 3

Connect the cables to the ports on the VI-APT01 rear panel through the enclosure

#### Step 4

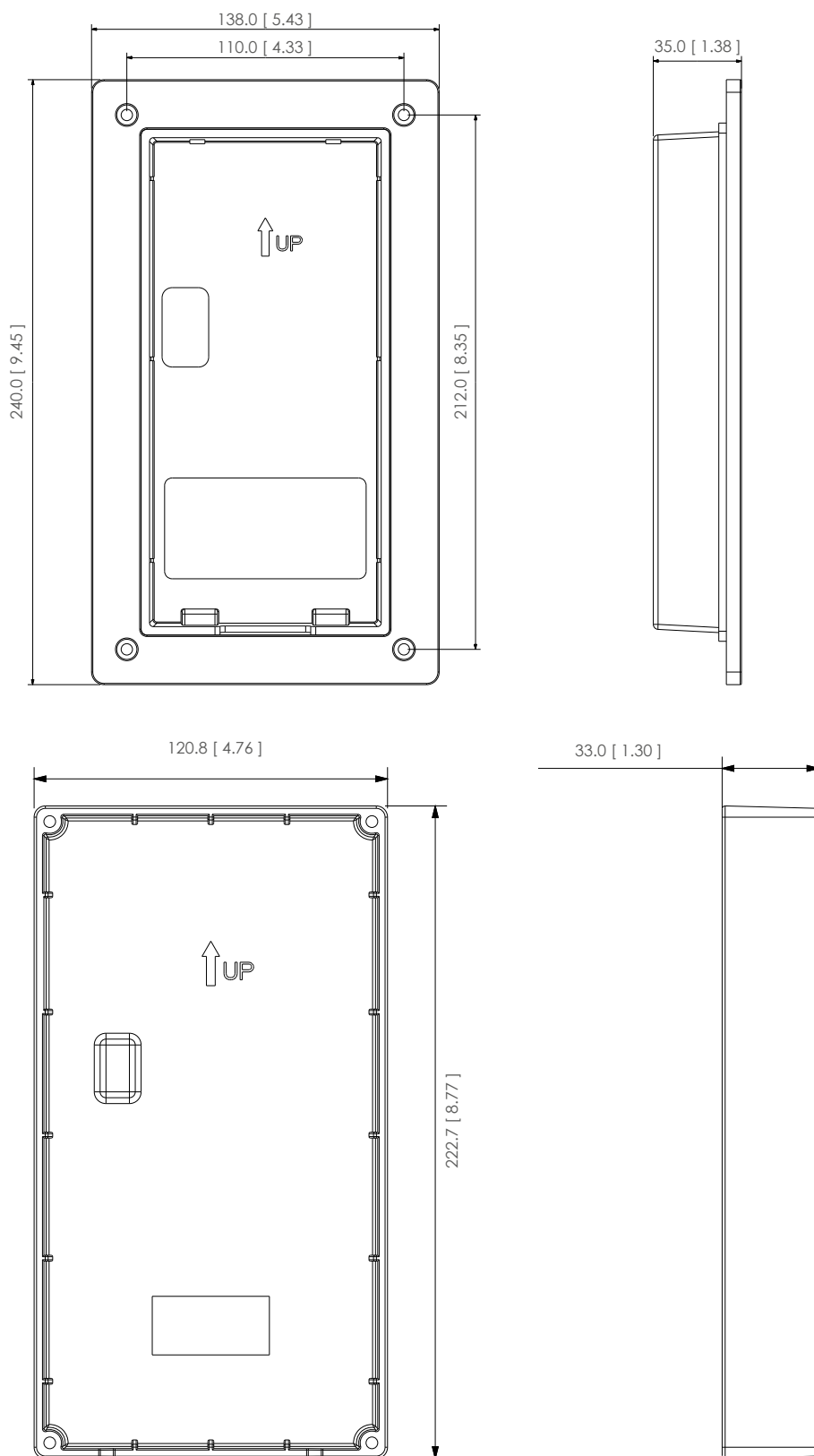
Fix the VI-APT01 in the enclosure with the M3 screws, and then put sealant between the VI-APT01 and the enclosure.

#### Step 5

Fix the VI-APT01 and the enclosure in the mounting box with the ST4x25 screws.

(continued)

### Dimensions (mm[inch])



All specifications are subject to change without notice. Copyright © Luxrite Ltd. All rights reserved