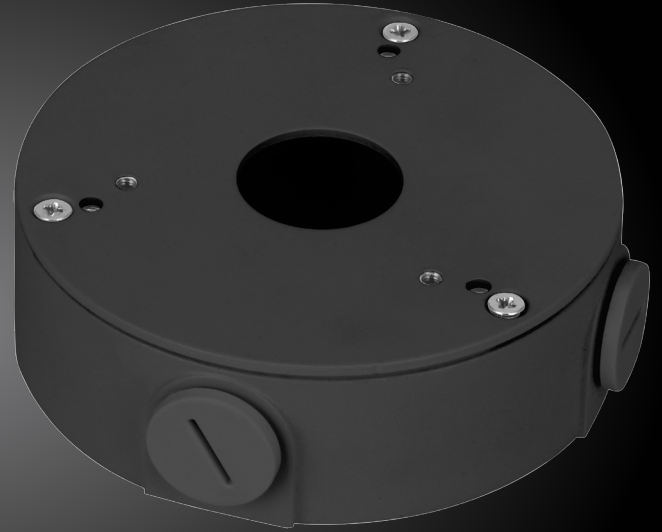


SPRO

BASE11-G

Junction Box



SPECIFICATIONS

Model Number	BASE11-G
Material	Aluminum alloy
Dimensions	Φ111.6 mm × 36.0 mm (Φ4.39" × 1.42")
Colour	Grey
Net Weight	0.33 kg (0.73 lb)
Load Bearing	2.0 kg (4.4 lb)
Inch Thread	M20(G1/2")
Operating Temperature	-40°C~+60°C (-40°F~+140°F)
Operating Humidity	<90% (RH)

Dimensions (mm[inch])

