

SPRO[®]**IP**

AI
ARTIFICIAL
INTELLIGENCE

DHIPD40/28RG/50-M-I2

4MP IP Turret Camera with AI Technology



Key Features:

- 4-MP 1/1.8" CMOS image sensor
- 4 MP (2688×1520) @25/30fps
- AcuPick
- 2.8mm Lens
- Up to 50m IR distance
- SMD 3.0 (Smart motion detection 3.0)
- Intrusion (human & vehicle classification)
- Tripwire (human & vehicle classification)
- Microphone built-in (audio over CAT5e cable)
- 140dB WDR
- IP67 waterproof
- DC 12V/POE



SPECIFICATIONS

Model Number	DHIPD40/28RG/50-M-I2
Image Sensor	1/1.8" CMOS
Max. Resolution	2688 (H) x 1520 (V)
ROM	4GB
RAM	1GB

(continued)

Scanning System	Progressive
Electronic Shutter Speed	Auto/Manual 1/3 s-1/100,00 s
Min. Illumination	0.0007 lux@F1.6 (Colour, 30IRE) 0.0004 lux@F1.6 (B/W, 30IRE) 0 lux (Illuminator on)
S/N Ratio	>56 dB
Illumination Distance	50 m (164.04 ft) (IR)
Illuminator On/Off Control	Auto; Manual
Illuminator Number	2 (IR LED)
Angle Adjustment	Pan: 0°–360° Tilt: 0°–78° Rotation: 0°–360°

Lens

Lens Type	Fixed-focal
Lens Mount	M12
Focal Length	2.8mm
Max. Aperture	F1.6
Field of View	2.8 mm: H: 112°; V: 58°; D: 139°
Iris Control	Fixed
Close Focus Distance	2.8 mm: 1.3 m (4.27 ft)
	2.8mm
DORI Distance	Detect: 61.5 m Observe: 24.6 m Recognise: 12.3 m Identify: 6.2 m

Intelligence	
IVS	Intrusion, tripwire, fast moving (the three functions support the classification and accurate detection of vehicle and human); loitering detection, people gathering and parking detection
Smart Object Detection	Smart abandoned object; smart missing object
SMD 3.0	Less false alarm, longer detection distance
AI SSA	Yes
Face Detection	Face detection; track; snapshot; snapshot optimization; optimal face snapshot upload; face enhancement; face exposure; face attributes extraction including 6 attributes and 8 expressions; face snapshot set as face, one-inch photo or custom; snapshot strategies (real-time snapshot, quality priority and optimization snapshot); face angle filter; optimization time setting.
People Counting	Tripwire people counting, generating and exporting report (day/ week/month/year); people counting in area and queue management; generating and exporting report (day/week/month); 4 rules can be set for tripwire, people counting in area and queue management.
Heat Map	Yes
Video Metadata	Motor vehicle, non-motor vehicle, face, human body detection; track; snapshot; snapshot optimization; optimal face snapshot upload. Motor vehicle attributes: vehicle type, vehicle colour, vehicle logo and other attributes : seatbelt, smoking, calling. Non-motor vehicle attributes: type, colour, number of people, top type and colour, hat. Human body attributes: gender, top/bottom type and colour, bag, hat and umbrella. Face attributes: gender, age, expressions, glasses, face mask and beard.
Smart Search	Work together with Smart NVR to perform refine intelligent search, event extraction and merging to event videos.
Smart Sound Detection	Yes

Video	
Video Compression	H.265; H.264; H.264H; H.264B; MJPEG (Only supported by the sub stream)
Smart Codec	Smart H.265+; Smart H.264+
AI Coding	AI H.265+; Smart H.264+
Video Frame Rate	Main stream: 2688 × 1520 (1 fps–25/30 fps) / 1920 × 1080 (1 fps–50/60 fps) Sub stream: D1@(1–25/30 fps) Third stream: 1080p@(1–25/30 fps) Fourth stream: 720p@(1–25/30 fps) *The values above are the max. frame rates of each stream; for multiple streams, the values will be subjected to the total encoding capacity.
Stream Capability	4 streams
Resolution	4M (2688 × 1520); 3.6M (2560 × 1440); 3M (2048 × 1535); 3M (2304 × 1296); 1080p (1920 × 1080); 1.3M (1280 × 960); 720p (1280 × 720); D1 (704 × 576/704 × 480); VGA (640 × 480); CIF (352 × 288/352 × 240)
Bit Rate Control	CBR/VBR
Video Bit Rate	H.264: 32 kbps–16384 kbps H.265: 12 kbps–11008 kbps
Day / Night	Auto(ICR)/Colour/B/W
BLC	Yes
HLC	Yes
WDR	140 dB
Scene Self-adaptation	Yes
White Balance	Auto; natural; street lamp; outdoor; manual; regional custom
Gain Control	Auto
Noise Reduction	3D NR
Motion Detection	OFF/ON (4 areas, rectangular)
Region of Interest (ROI)	Yes (4 areas)
Smart Illumination	Yes
Defog	Yes
Image Rotation	0°/90°/180°/270° (Support 90°/270° with 4M (2688 × 1520) resolution and lower)

(continued)

Mirror	Yes
Privacy Masking	8 areas
Audio	
Built-in MIC	Yes
Audio Compression	G.711a; G:711Mu; PCM; G.726; G.723
Alarm	
Alarm Event	No SD card; SD card full; SD card error; network disconnection; IP conflict; illegal access; motion detection; video tampering; tripwire; intrusion; fast moving; abandoned object; missing object; loitering detection; people gathering; parking detection; scene changing; audio detection; voltage detection; external alarm; face detection; video metadata; SMD; people counting in area; stay detection; people counting; people number error detection; queue people number alarm; queue time alarm; security exception
Network	
Network Port	RJ-45 (10/100 Enhancement Base-T)
SDK and API	Yes
Network Protocol	IPv4; IPv6; HTTP; TCP; UDP; ARP; RTP; RTSP; RTCP; RTMP; SMTP; FTP; SFTP; DHCP; DNS; DDNS; QoS; UPnP; NTP; Multicast; ICMP; IGMP; NFS; SAMBA; PPPoE; SNMP; P2P
Interoperability	ONVIF (Profile S / Profile G / Profile T); CGI
User / Host	20 (Total bandwidth: 80M)
Storage	FTP; SFTP; Micro SD card (support max. 512 GB); NAS
Browser	IE; Chrome ; Firefox
Management Software	DMSS
Mobile Client	iOS; Android
Cyber Security	Configuration encryption; trusted execution; Digest; security logs; WSSE; account lockout; syslog; video encryption; 802.1x; IP/MAC filtering; HTTPS; trusted upgrade; trusted boot; firmware encryption; generation and importing of X.509 certification

(continued)

Certification

Certifications

CE-LVD: EN62368-1

CE-EMC: Electromagnetic Compatibility Directive 2014/30/EU

FCC: 47 CFR FCC Part 15, Subpart B

UL/CUL: UL62368-1 & CAN/CSA C22.2 No. 62368-1-14

Port

Audio Input	1 channel (RCA port)
Audio Output	1 channel (RCA port)
Alarm Input	1 channel in: wet contact, 5mA 3V-5V DC
Alarm Output	1 channel out: wet contact, 300mA 12V DC

Power

Power Supply	12 VDC/PoE (802.3af)/ePoE
Power Consumption	Basic: 4.3 W (12 VDC); 5.5 W (PoE); Max. (H.265+ WDR+ Intelligence on+IR on): 8.2 W (12 VDC); 9.7 W (PoE)

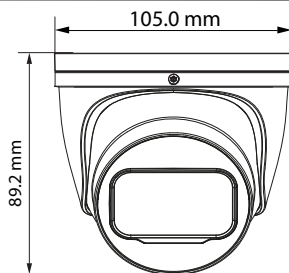
Environment

Operating Temperature	-40 °C to +60 °C (-40 °F to +140 °F)
Operating Humidity	≤95%
Storage Temperature	-40 °C to +60 °C (-40 °F to +140 °F)
Storage Humidity	10%–95% (RH), non-condensing
Protection	IP67

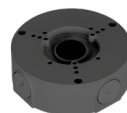
Structure

Casing Material	Metal
Product Dimensions	89.2 mm × Φ105.0 mm
Net Weight	500 g (1.10 lb)
Gross Weight	770 g (1.70 lb)

Dimensions (mm[inch])



Accessories



BASE05-G



WALLBRACKET02-G



POLEBRACKET01



LUXRITE[®]
SECURITY YOU CAN TRUST

All specifications are subject to change without notice. Copyright © Luxrite Ltd. All rights reserved